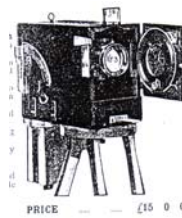


AMERICAN MINUTE PHOTO CO.
(Chicago)
American Sleeve Machine - A street camera for tintypes, similar to the more common models by the Chicago Ferrottype Co. \$150-225.



Before Pola
American Sleeve Machine

Before Pola
Aptus Autocard

Before Pola 1908?
Aptus Automatic Ferrottype

Before Pola
Aptus de Luxe Model B (und C)

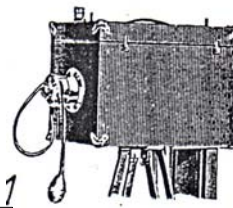


Before Pola
Aptus Junior de Luxe

Before Pola
Aptus Junior de Luxe Combinatio

Before Pola
Aptus Model A

Before Pola
Benson



Before Pola
Benson Dry Plate

Before Pola
Bosco

Before Pola
Bosporus

Before Pola 1911
Canon Photobutton



Before Pola
Chambre

Before Pola
Champion Minute Photo Machine

Before Pola
Chicago Ferrottype

Before Pola
Dandycam



Before Pola
Daydark

Before Pola
Daydark A (and B)

Before Pola
Daydark B-W

Before Pola
Daydark D



Before Pola
Daydark D-15

Before Pola
Daydark D-2

Before Pola
Daydark D-4

Before Pola
Daydark E



Before Pola
Daydark Model C, Style 2



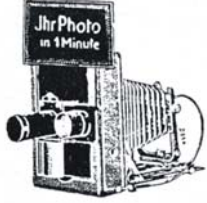
Before Pola
Daydark Wollensack



Before Pola
Diamond Gun

WABASH PHOTO SUPPLY
(Terre Haute, IN)
Direct positive camera - c1935.
Wood body. Ilex Universal f3.5/3" portrait
lens. Dimensions 5x8x20". With enlarger
and dryer. \$250-350.

Before Pola
Direct Positive Camera WABASH



Before Pola
Doxa Wunderansatz Birnbaum



Before Pola 1865
Dubroni De Poche Nr. 2



Before Pola
Dubroni Nr. 1



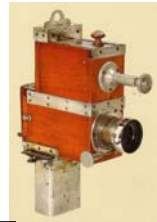
Before Pola
Eagle Camerascop



Before Pola
Ertee Button



Before Pola
Ertee Button

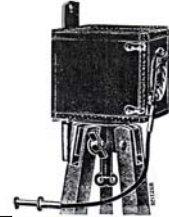


Before Pola 1895
Faller Eugen Ferrotypie

Before Pola
Fallowfield Popular Ferrotypie Ca

**LAACK (Julius Laack & Sons,
Rathenow)**
Ferrotypie camera - c1895. Metal
"cannon" camera for 25mm dia. ferrotypes.
f3.5/60mm lens. \$1200-1800.

Before Pola
Ferrotypie Camera Laack



Before Pola
Ferrotypia



Before Pola
Ferrotypia Broschenkamera

Gem Box - c1877. A series of cameras
for making multiple "gem" tintypes by using
from 4 to 12 lenses on Anthony's Universal
Portrait & Ferrotypie Camera. Camera
sizes from 3 1/4 x 4 1/4" to 6 1/2 x 8 1/2". Quite
rare. We would recommend consultation
with several reputable dealers or advanced
collectors, since these would interest only
a small group of collectors in the estimated
price range of \$3000-4000.

Before Pola
Gem Box



Before Pola
Glossnik Direct Positive



Before Pola
Ideal



Before Pola
Jano

Before Pola 1930
Jano Postcardcamera



Before Pola 1954
Jano While you wait



Before Pola
Keystone Ferrotypie



Before Pola
Keystone Ferrotypie



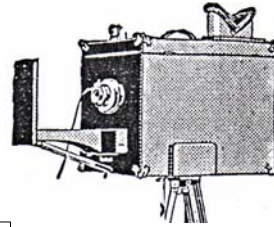
Before Pola 1914
Mandelette



Before Pola 1913
Mandelette



Before Pola 1930
Maton



Before Pola
Mikosch



Before Pola
Model A



Before Pola
Moore



Before Pola
Moore & Co

Before Pola
MOUNTFORD (W.S. Mountford
Mfg., NY)
Button tintype camera - Leather-
covered cannon-style button tintype taking
100 1" dia. tintypes. \$1200-1800.

Before Pola
Mountford Button Tintype Camera

Before Pola
Mountford Direct Positive Camera



Before Pola 1899
Nodark

Before Pola
BOLLES & SMITH (L.M. Bolles & W.G.
Smith, Cooperstown, NY)
Patent Camera Box - c1857. An
unusual sliding-box style camera for in-
camera processing of single 4 1/4 x 6 1/2" wet
collodion plates. With this camera,
the photographer could sensitize, expose, and
develop wet plates entirely within the
camera. Patented in 1857, this pre-dates
the famous (and less complicated) Dubroni
camera. It is also more rare. Estimate:
\$7,500-12,000.

Before Pola
Patent Camera Box



Before Pola
PDQ Modell G



Before Pola
PDQ Modell H



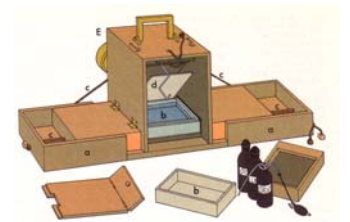
Before Pola
PDQ Modell H

Before Pola
PDO CAMERA CO. (Chicago)
PDQ Photo Button Camera - c1930.
All-metal button tintype camera. Echo
Anastigmatlens. \$1200-1800.

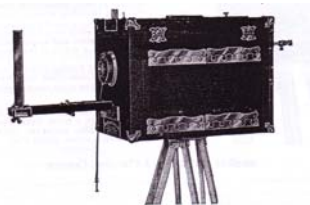
Before Pola
PDQ Photo Button Camera



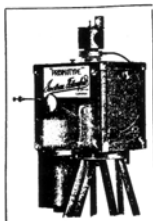
Before Pola
Photo See Model 100 (Modell A)



Before Pola 1876
Photographon



Before Pola
Post Card Camera



Before Pola
Prismotype Fallowfield



Before Pola
Proctor Portrait Camera



Before Pola
Quta



Before Pola
Romain Talbot Errtee



Before Pola 1948
Speed-O-Matic



Before Pola
Streetcamera



Before Pola
Streetcamera



Before Pola
Streetcamera



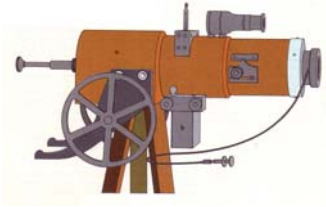
Before Pola
Streetcamera



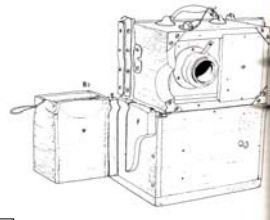
Before Pola
Streetcamera



Before Pola 1902
Takuquick



Before Pola 1912
Talbot Räderkanone



Before Pola 1905
Taquta



Before Pola
The Mandel



Before Pola
The Star



Before Pola 1910
The Telephot Button



Before Pola
Thompson

NEW YORK FERROTYPE CO.
Tintype camera - c1906. Professional model with three-section plateholder for postcards, 1 1/2x2 1/2" tintypes, and "button" tintypes. Two-speed Wollensak shutter. With tank and black sleeve. \$250-350.

Before Pola
Tintyp Camera New York Ferrotyp



Before Pola
Velophot



Before Pola
Victor Benson Dry Plate



Before Pola 1910
Wonder Photo Cannon